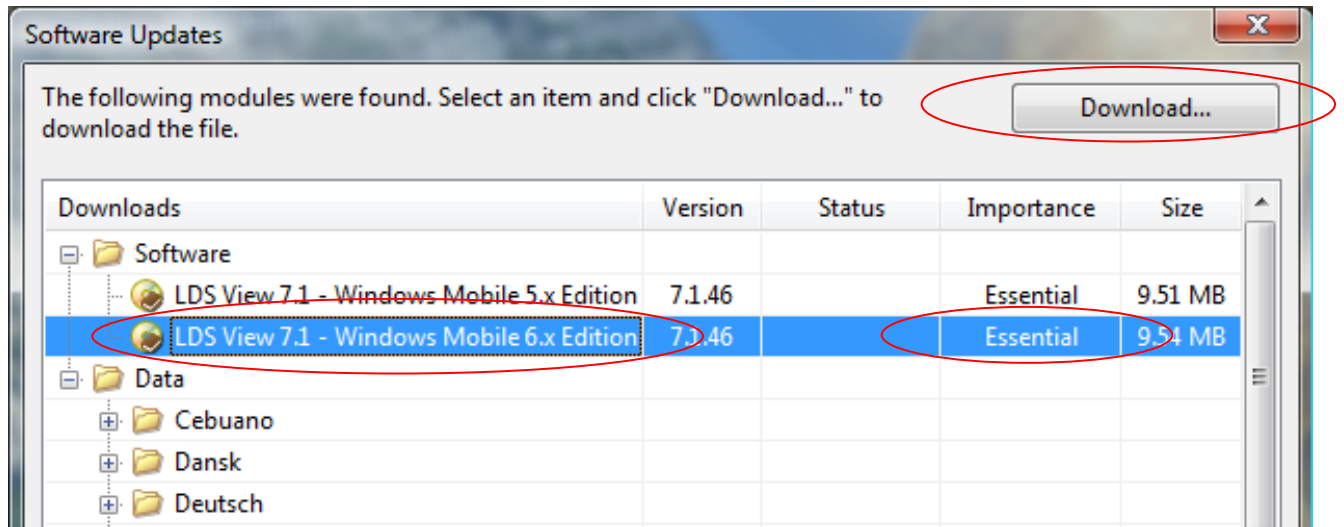


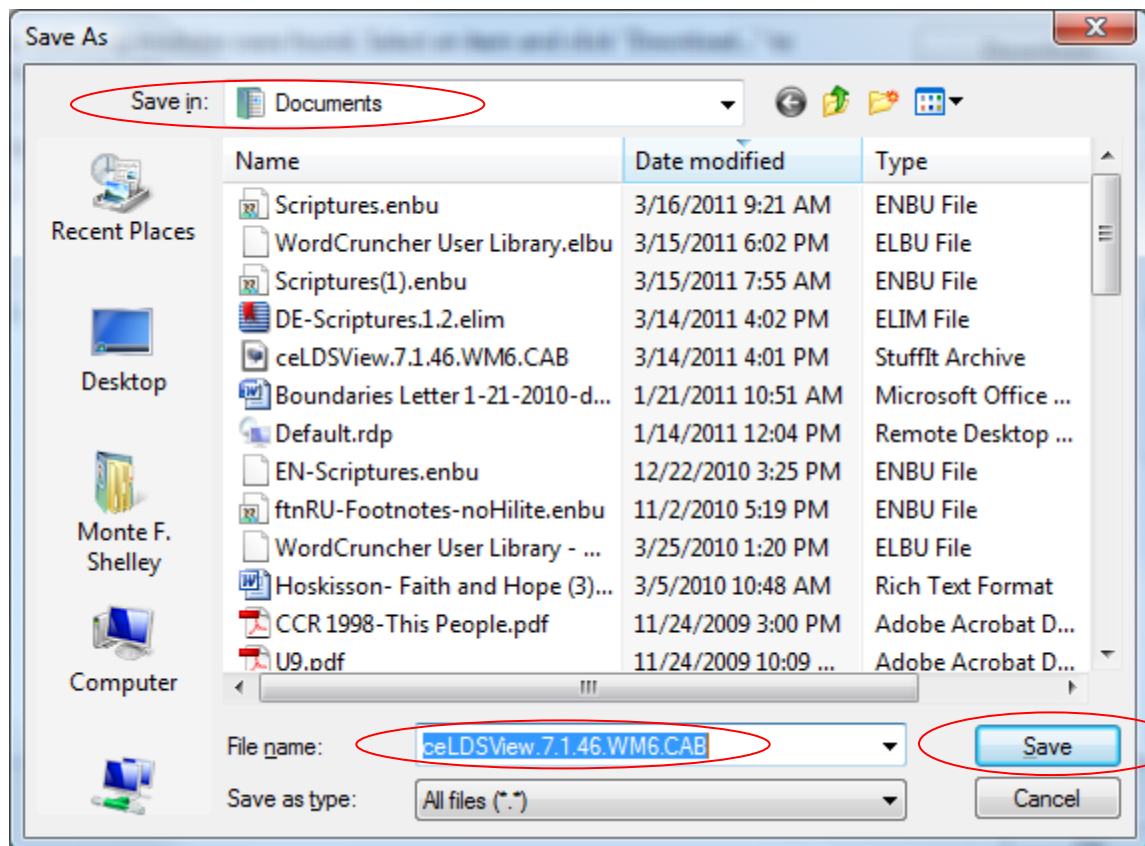
How to Download and Install LDS View for Windows Mobile

Download files to your desktop or laptop computer.

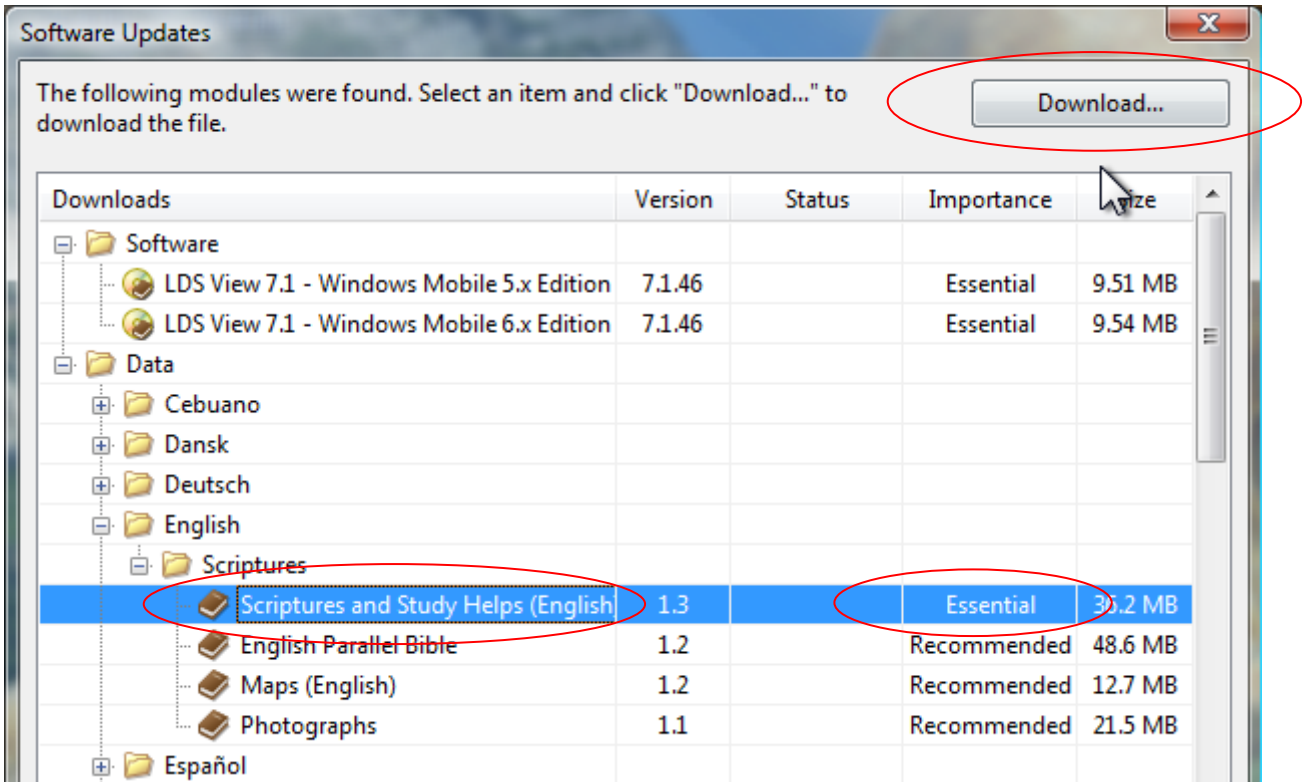
1. When you run the LDS View Downloader program (ceSetup.exe) on your Windows desktop or laptop computer, you will see the following screen.
2. Select the appropriate version of Windows Mobile (e.g., 6.x) you want.
3. Click on the Download... button to download the appropriate CAB installation file.



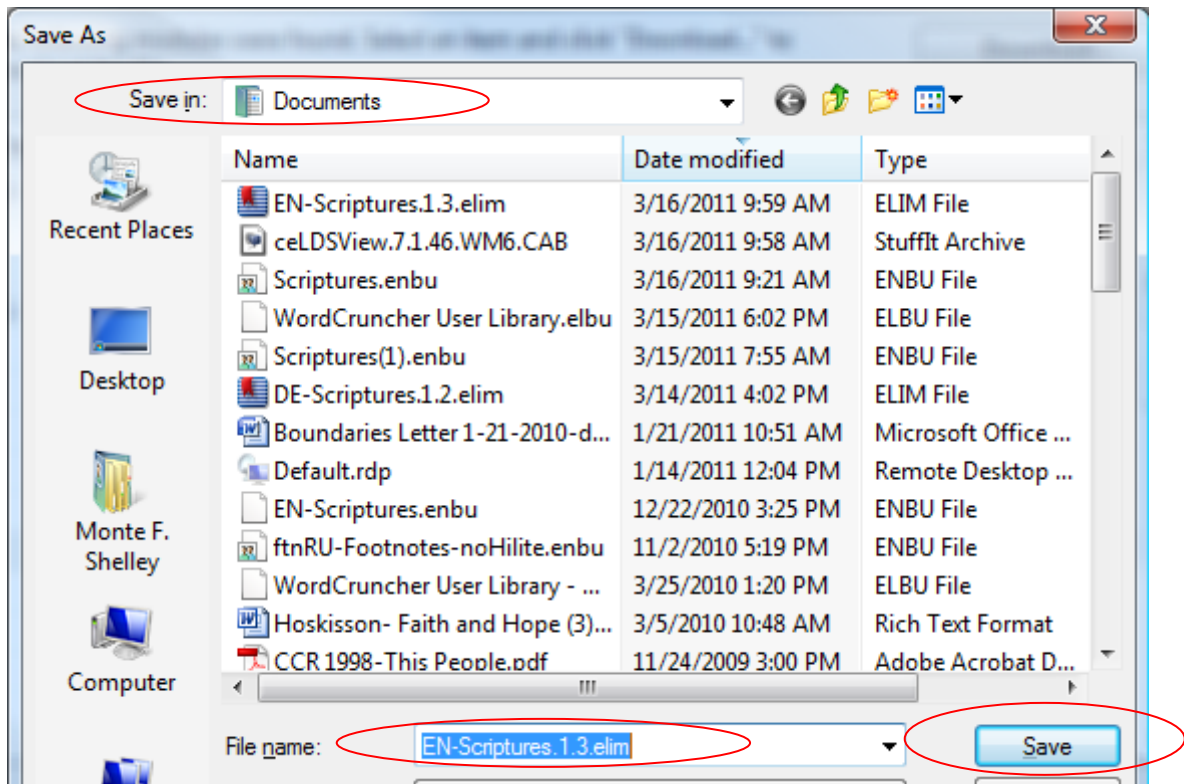
4. When the Save As window appears, select the folder (e.g., Documents) where the CAB file will go.
5. Click on the Save button.



6. Select the Data you want (e.g., English Scriptures).
7. Select an Essential book and click on Download... to download the file (ELIM).



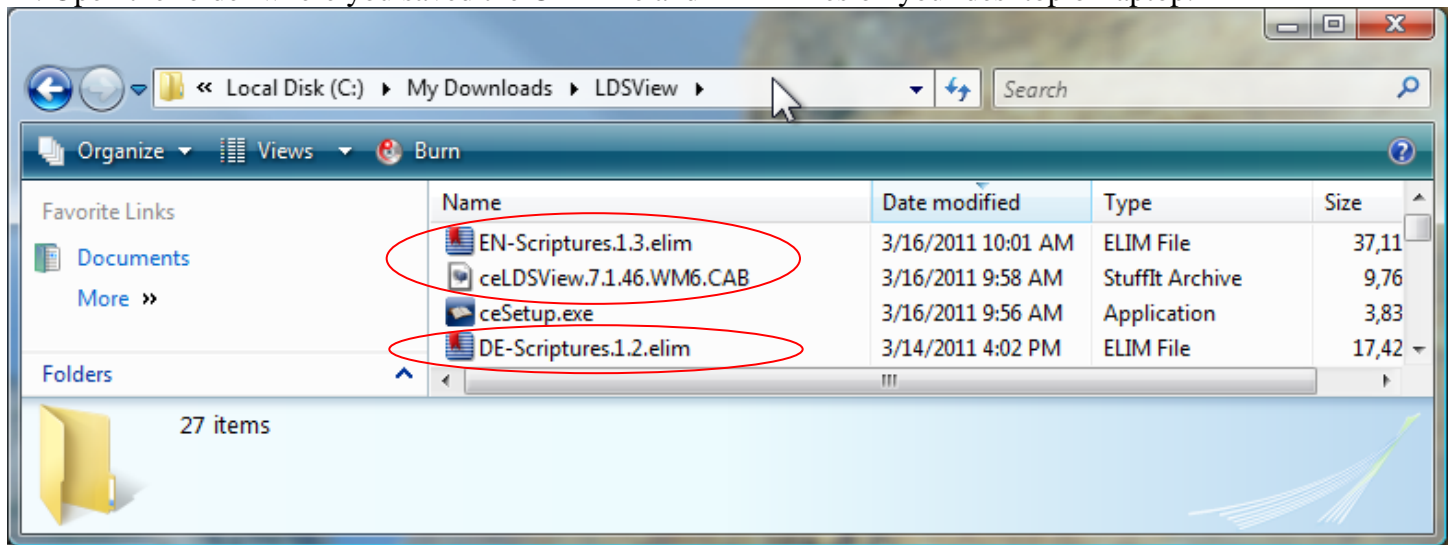
8. When the Save As window appears, select the folder (e.g., Documents) where I want to put the ELIM file.
9. Click on the Save button.



10. Repeat steps 6 to 9 for each recommended English book or the books for other languages (e.g., German).

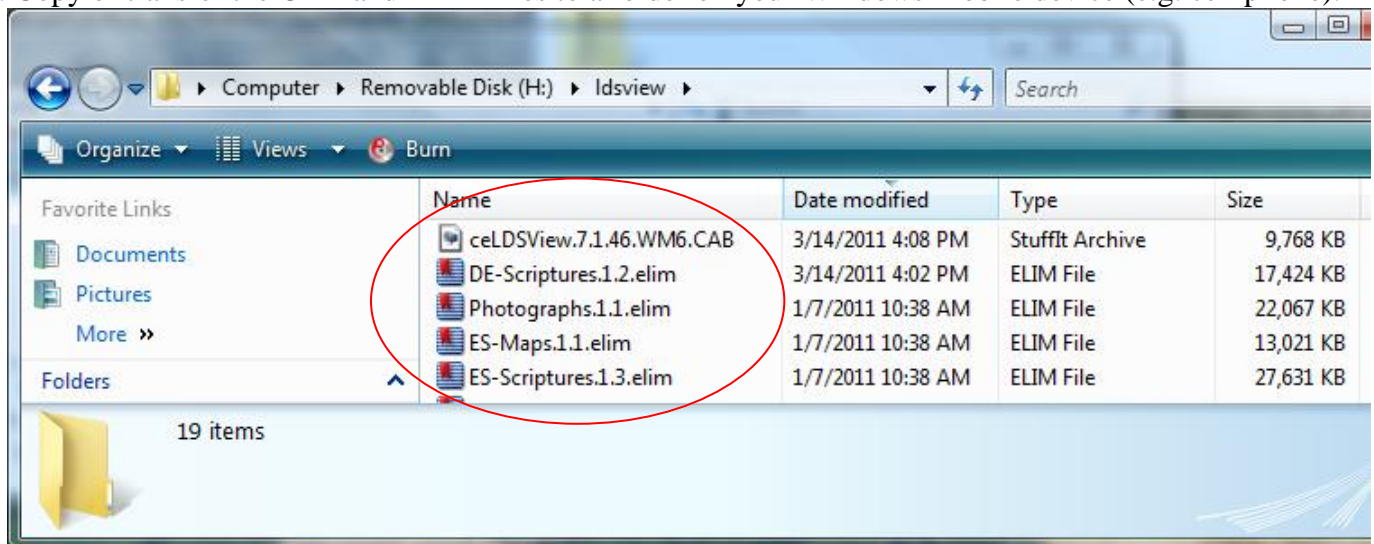
Transfer files to your mobile phone or device.

11. Open the folder where you saved the CAB file and ELIM files on your desktop or laptop.



12. Connect your Windows Mobile device (e.g., cell phone) to your desktop/laptop as a disk drive (e.g., H:).
Note: You can transfer these files to your Windows Mobile® device using ActiveSync, Windows Mobile® Device Center, or a data card.

13. Copy or transfer the CAB and ELIM files to a folder on your Windows Mobile device (e.g. cell phone).



14. Disconnect your cell phone or other Windows Mobile device.

Install files on your mobile phone or device.

15. Use File Explorer on your cell phone to find the CAB file.

16. Double tap on the CAB file and follow the instructions to install the software.

When it asks if you would like to install on the device or a memory card, **choose the device!!!**

17. After the CAB file is installed, double tap on each ELIM file to add books to your LDS View Gospel Library. These ELIM files can be installed on a memory card to save space on your device.

18. Go to the *Start* menu and tap on the LDS View icon to run the software.

19. Select the *File* menu at the bottom of the screen to *Open...* other books.

20. Select the *File* menu and then *Options* to *Open the Help Book*.